

Kotohira Town Comprehensive Hazard Map 琴平町総合ハザードマップ

This map shows the expected inundation range, water depth, designated evacuation shelters and so forth when the embankments of Kanakura River and Doki River are broken due to heavy rain or overflow of the embankments. In case of emergency, check the flood-assumed area due to heavy rain and then confirm the route from your home to the designated evacuation shelter and the contact information of your family members on a daily basis.

If the town issues "Warning Level 3", the elderly people must start evacuating from dangerous places. People who require any assistance should start evacuating early to "Kotohira Town General Center" using vehicles with the cooperation of supporters.

Also, when "Warning Level 4" is issued, all residents must evacuate from dangerous places immediately. If you are late to evacuate and judge that it is more dangerous to go outside, consider moving to the 2nd floor of your house or of the solid building nearby and waiting for rescue.

Note that flood may occur even in areas outside the "flooded-assumed area" shown on the map, depending on the situation.

The conditions such as heavy rainfall assumed in the inundation forecast are the rainfall (Kanakura River: total rainfall of 726.6 mm in 24 hours, Doki River: total rainfall of 356 mm in 6 hours), which is the basis of the plan to protect the town from floods.

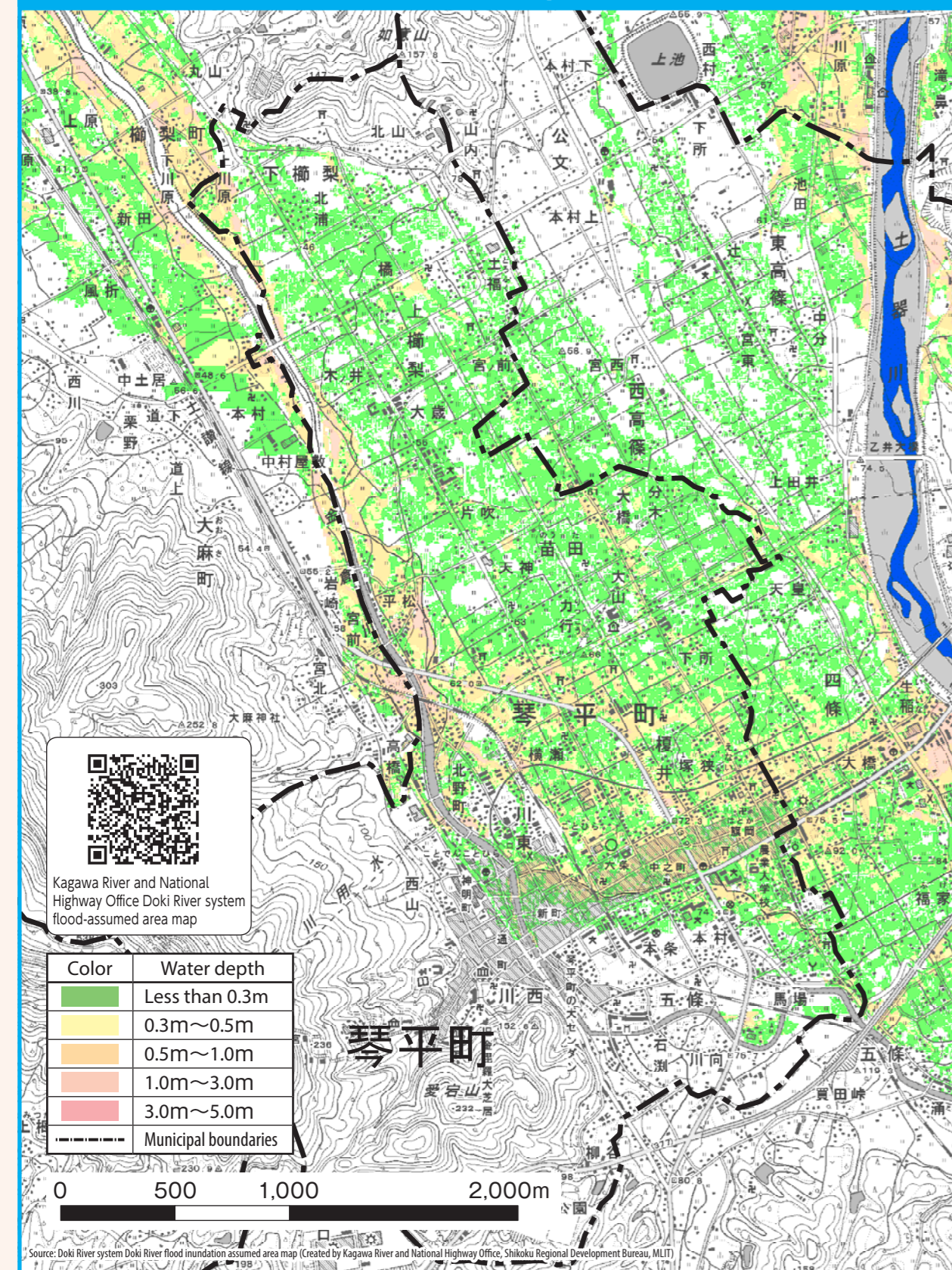
Emergency contact

Police	110
Fire Station・Ambulance	119
1 Kotohira Town Office	75-6700
2 Kotohira Police Station	75-0110
3 Ekimae Police Box	73-5791
4 Nakatado Nambu Fire Station HQ	73-4211

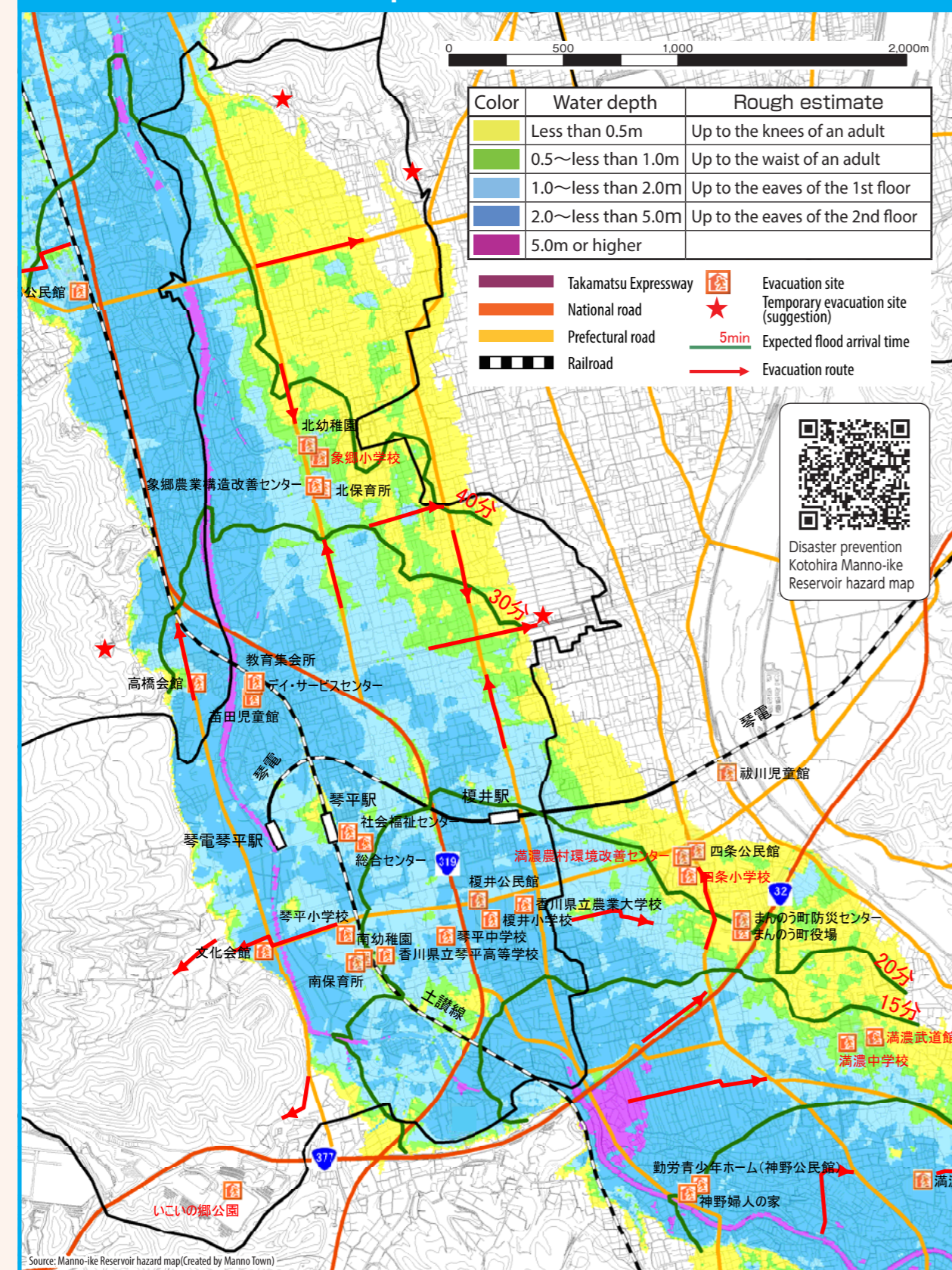


Kagawa Prefecture flood inundation assumed area map (Kanakura River)

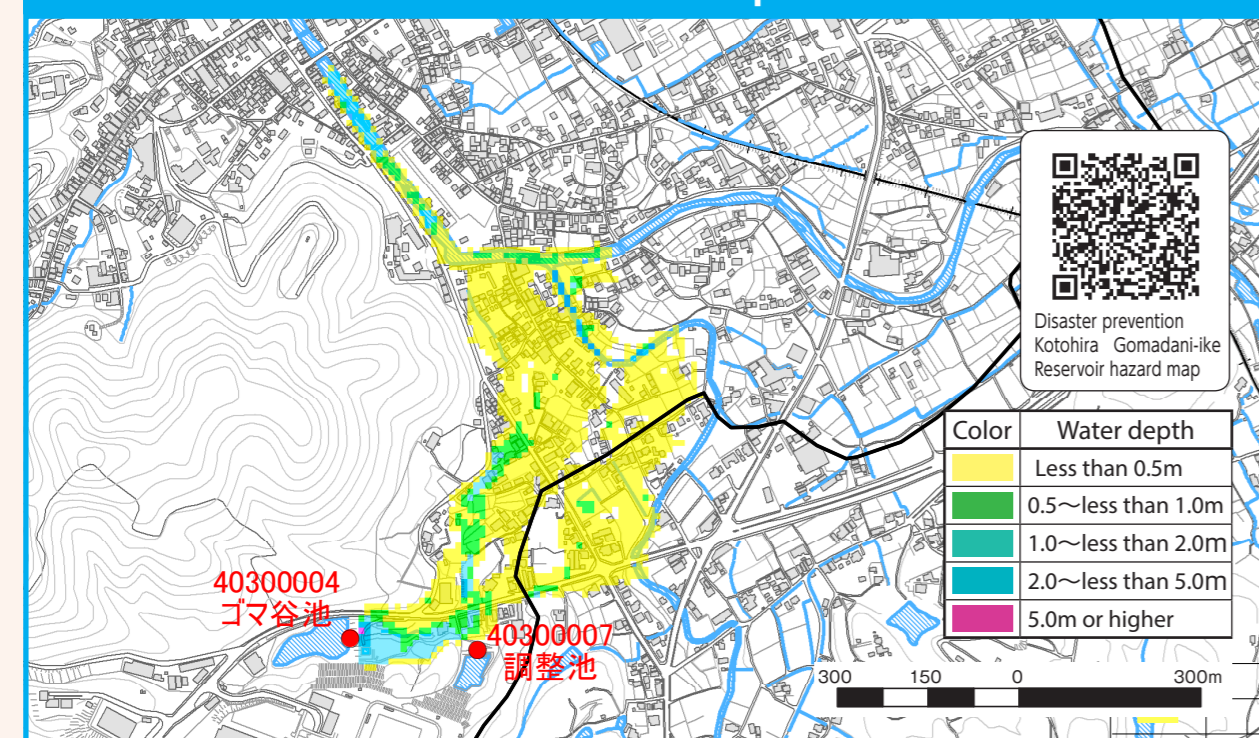
Doki River flood inundation assumed area map (in assumed maximum scale)



Manno-ike Reservoir hazard map



Gomadani-ike Reservoir floodassumed area map



Designated evacuation shelters and designated emergency evacuation sites

Number	Facility name	Telephone number	Suitability		
			Flood	Landslide	Earthquake
1	Kotohira Municipal Enai Elementary School	73-2494	△	○	○
2	Kotohira Municipal Enai Community Center	75-3575	△	○	○
3	Kotohira Municipal Kotohira Junior High School	73-4181	△	○	○
4	Kotohira Municipal Minami Kindergarten	73-2521	△	○	○
5	Kotohira Municipal Minami Nursery School	75-1022	△	○	○
6	Kotohira Municipal Kotohira Elementary School	73-2831	△	○	○
7	Kotohira Town General Center	75-6718	△	○	○
8	Kotohira Town Social Welfare Center	75-1371	△	○	○
9	Kotohira Town Cultural Center	73-5586	△	△	○
10	Kotohira Town Fureaikouryukan	73-3891	△	○	○
11	Kotohira Town Day Service Center	73-2881	△	○	○
12	Kotohira Municipal Educational Meeting House	73-5870	△	○	○
13	Kotohira Municipal Kita Nursery School	73-3440	△	○	○
14	Zogo Nougoukouzoukaizen Center	75-3135	×	○	○
15	Kotohira Municipal Zogo Elementary School	73-2830	△	○	○
16	Kotohira Municipal Kita Kindergarten	73-2523	△	○	○
17	Ikoinosato Park	75-0010	△	○	○
18	Kagawa Prefectural Kotohira High School	73-2261	△	○	○
19	Kagawa College of Agriculture	75-1141	△	○	○

- : Can be used as an evacuation site
- △ : Can be used as an evacuation site conditionally (using the second floor, etc.)
- ×
- ✕ : Cannot be used as an evacuation site
- * If a flood is expected, please evacuate early.
- * Evacuation shelters will be opened sequentially according to the expected scale of the damages.

First-aid station

Number	Facility name	Telephone number
20	Ikeda Internist Clinic	73-2366
21	Iwasa Hospital	73-3535
22	Iwasaki Clinic	75-5161
23	Oura Internal Medicine Gastroenterology Clinic	75-1600
24	Onishi Clinics	75-5101
25	Mori Internist Clinic	73-4188
26	Yamamoto Otorhinolaryngology	75-4133
27	Gojo Ophthalmology Clinic	75-5040
28	Hamada Ophthalmology Clinic	73-3322
29	Utsumi Dental Clinic	75-4182
30	Kagawa Dental Clinic	75-2311
31	Shiota Dental Clinic	75-3497
32	Shimada Dental Clinic	75-4172
33	Maeda Dental Clinic	75-3873

Emergency first-aid station

Number	Facility name
21	Iwasa Hospital Parking

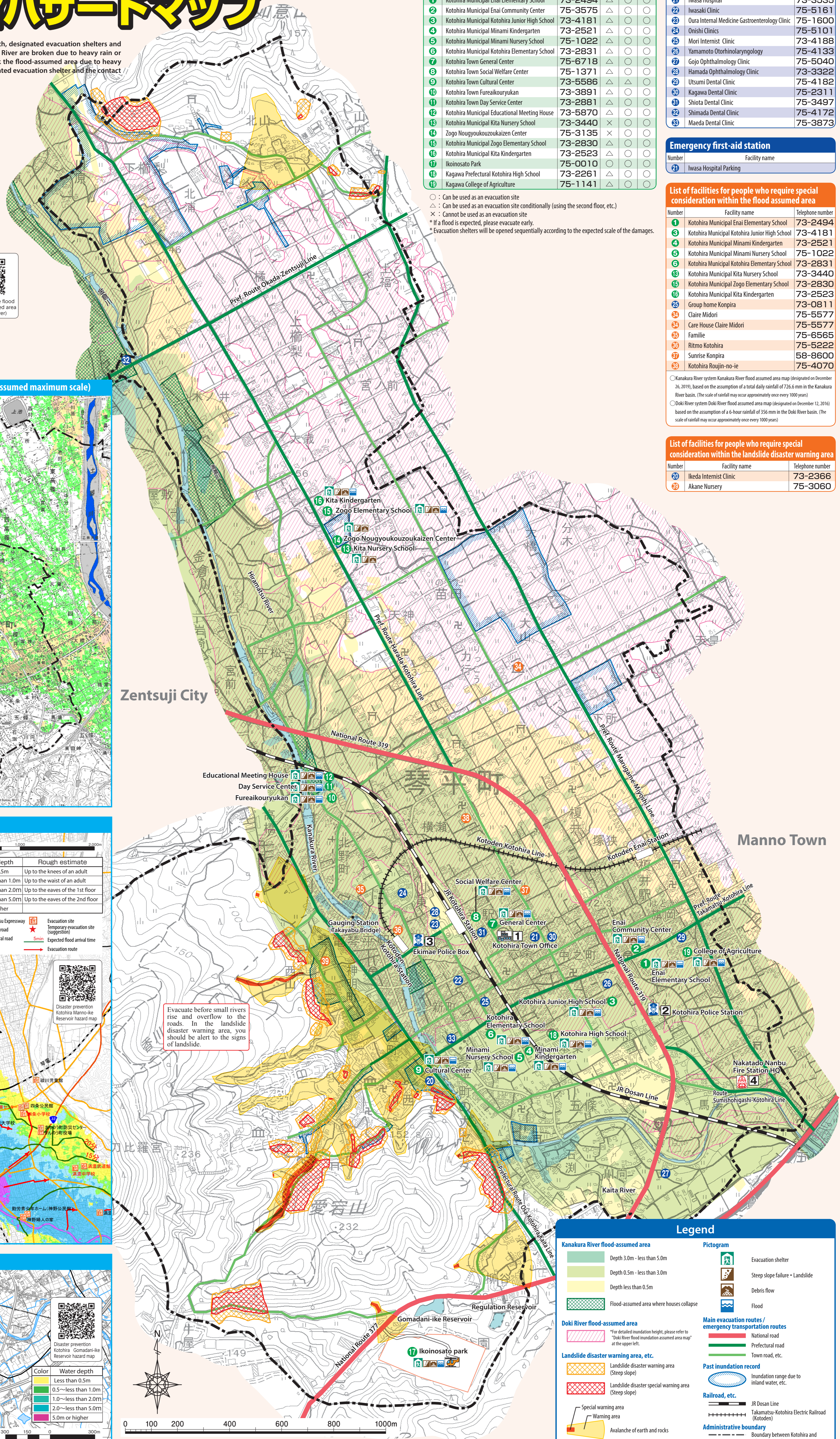
List of facilities for people who require special consideration within the flood assumed area

Number	Facility name	Telephone number
1	Kotohira Municipal Enai Elementary School	73-2494
2	Kotohira Municipal Kotohira Junior High School	73-4181
3	Kotohira Municipal Minami Kindergarten	73-2521
4	Kotohira Municipal Kotohira Elementary School	73-2831
5	Kotohira Municipal Kita Nursery School	73-3440
6	Kotohira Municipal Zogo Elementary School	73-2830
7	Kotohira Municipal Kita Kindergarten	73-2523
8	Group home Kompira	73-0811
9	Claire Midori	75-5577
10	Care House Claire Midori	75-5577
11	Family	75-6565
12	Ritmo Kotohira	75-5222
13	Sunrise Kompira	58-8600
14	Kotohira Roujin-no-ie	75-4070

○ Kanakura River system Kanakura River flood assumed area map (designated on December 26, 2019), based on the assumption of a total daily rainfall of 726.6 mm in the Kanakura River basin. (The scale of rainfall may occur approximately once every 1000 years.)
 ○ Doki River system Doki River flood assumed area map (designated on December 12, 2016) based on the assumption of a 6-hour rainfall of 356 mm in the Doki River basin. (The scale of rainfall may occur approximately once every 1000 years.)

List of facilities for people who require special consideration within the landslide disaster warning area

Number	Facility name	Telephone number
20	Ikeda Internist Clinic	73-2366
21	Akane Nursery	75-3060



Evacuate before small rivers rise and overflow to the roads. In the landslide disaster warning area, you should be alert to the signs of landslide.

Legend

Kanakura River flood-assumed area	Depth 3.0m - less than 5.0m	Depth 0.5m - less than 3.0m	Depth less than 0.5m	Flood-assumed area where houses collapse	Doki River flood-assumed area	*For detailed inundation height, please refer to "Doki River flood inundation assumed area map" at the upper left.
Landslide disaster warning area (Steep slope)	Landslide disaster special warning area (Steep slope)	Special warning area	Warning area	Avalanche of earth and rocks	Evacuation shelter	Steep slope failure・Landslide
Main evacuation routes / emergency transportation routes	National road	Prefectural road	Town road, etc.	Past inundation record	Inundation range due to inland water, etc.	Railroad, etc.
JR Dosan Line	Takamatsu-Kotohira Electric Railroad (Kotoden)	Administrative boundary	Boundary between Kotohira and other cities and towns			