

# Kotohira Town Comprehensive Hazard Map

# 琴平町総合ハザードマップ



令和2年度  
保存版

The 2nd year of Reiwa  
For your reference

## Disaster prevention notes for our home

Check in advance evacuation site and safe route.  
In addition, put the accompanying My Map Sticker on the map of the other side.

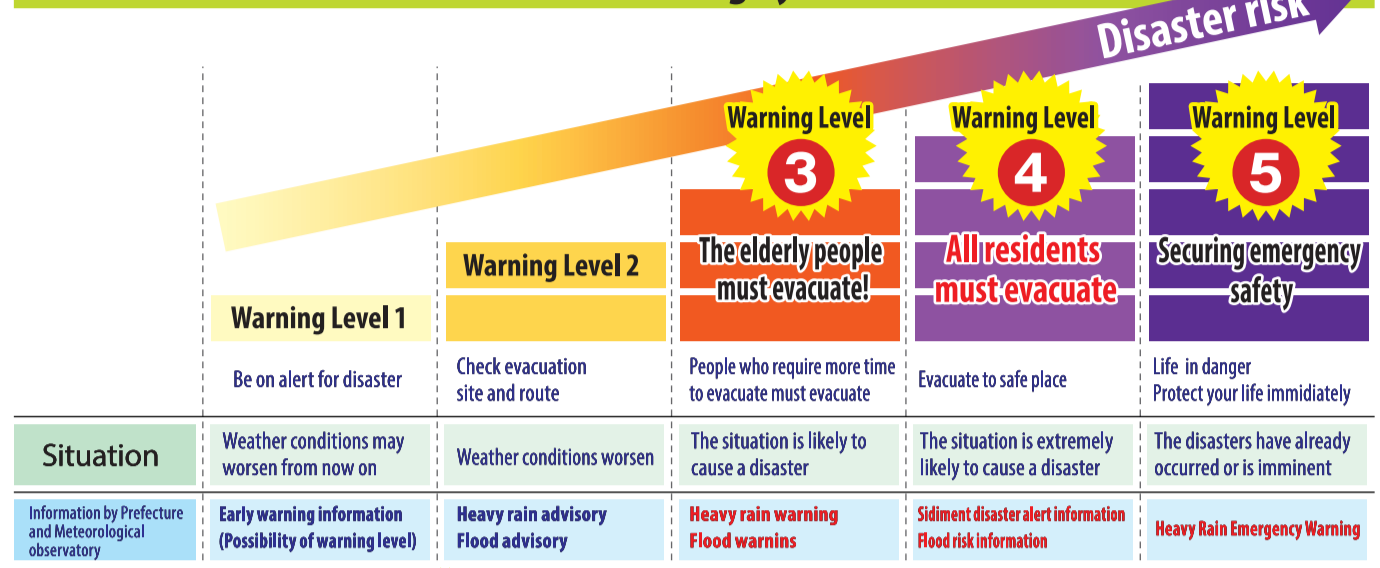
Evacuation site for my family	Name of family members (Relatives, Acquaintances, etc.)	Telephone number (Company, School or Mobile)	Remarks
Meeting place for my family			
Place to store our emergency supplies			

## Warning levels and evacuation actions

### Attitudes to evacuation

- ◆ Primarily, evacuation advisory means a recommendation to leave (from the dangerous place where you are) for evacuation.
- ◆ When an evacuation advisory is issued by the town, you should evacuate immediately to a designated emergency evacuation site according to the type of disaster.
- ◆ If you judge that it is even dangerous to move to the designated emergency evacuation site, you may move to a "safe place in the neighborhood".
- ◆ If you judge that it is even dangerous to evacuate to the "safe place in the neighborhood", you may have no choice but to do "Ensuring indoor safety," that is moving to a safe room and so forth in the building where you are at the time.

### 5-Level Warnig System



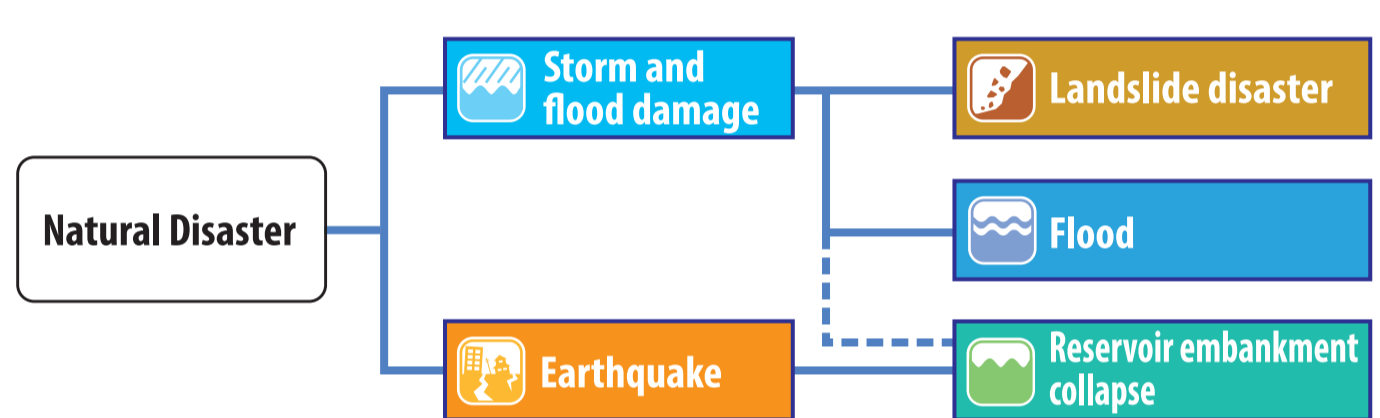
**Warning Level 4**  
All residents must evacuate!

At warning level 5, the disasters have already occurred  
At warning level 4, call out your neighborhood each other and evacuate safely and surely.

**If you judge that you are in danger, evacuate voluntarily.**  
Depending on the location, you should evacuate voluntarily rather than waiting for instructions. Also, evacuation sites are not always effective. Depending on the disaster situation, moving to the upper floors of tall buildings or staying where you are may be effective.

### Disaster classification

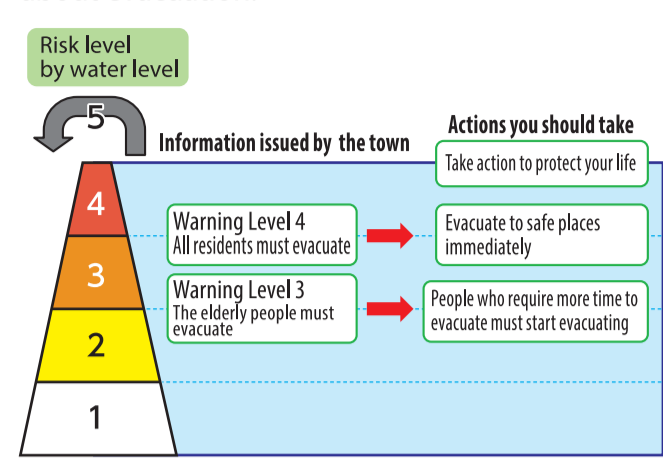
This booklet explains the following disasters that can occur in Kotohira Town.



## How to obtain information and evacuation preparedness

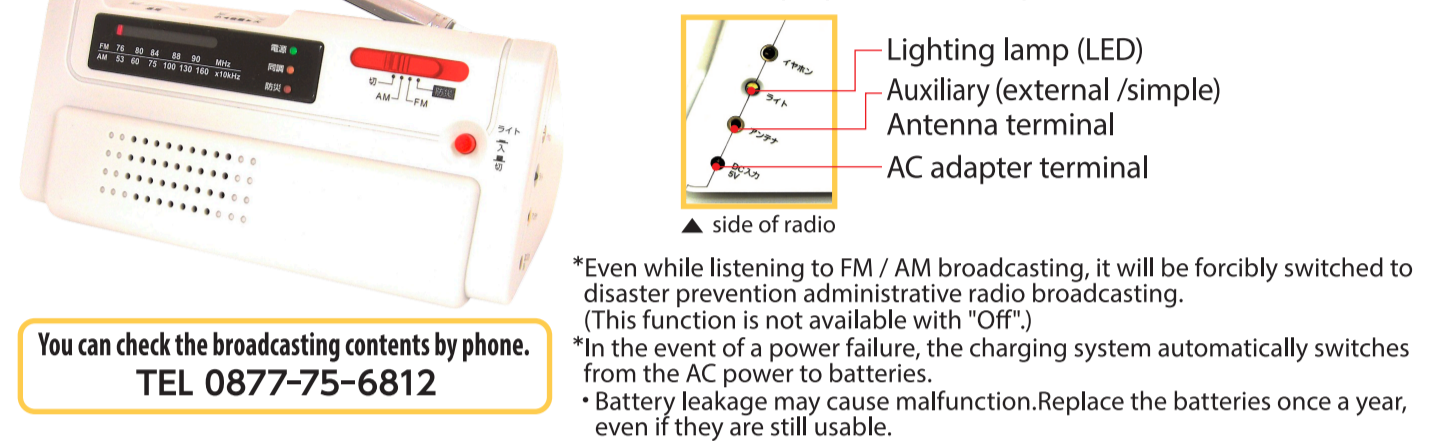
### Evacuation information during floods

Kotohira Town will comprehensively judge the following indicators and provide information about evacuation.



### Prepare for a situation where the power system and Internet environment are completely unavailable

**Disaster prevention radio equipment**  
In order to obtain information in the event of a disaster, we distribute a disaster prevention radio that receives and informs you of various information for a fee (1,000 yen at your own expense) in order to protect your family in the event of a disaster, have one per household. Let's prepare a disaster prevention radio!



### How to obtain disaster information

In the event of a disaster, you can obtain information in the following ways. Please make sure how to obtain information on a regular basis.

- Takamatsu Local Meteorological Observatory**  
We will continue to enhance the information about weather in Kagawa Prefecture.  
<http://www.jma-net.go.jp/takamatsu/>
- Kagawa disaster prevention web portal site**  
This is a collection of disaster prevention information for Kagawa Prefecture. We provide useful information for disaster prevention, such as hazard map and water level.  
<http://www.bousai-kagawa.jp/>
- Kagawa Prefecture Disaster Prevention Navi**  
This is the official app of Kagawa prefecture. You can quickly and accurately obtain evacuation information in the event of a disaster.
- E-mail registration of Disaster prevention information**  
You can receive weather information and evacuation information via mobile e-mail by scanning the two-dimensional barcode on the right side and registering for the Disaster prevention information e-mail.

### Proper knowledge about evacuation

<b>Confirm safe evacuation site and route!</b> <ul style="list-style-type: none"> <li>• Confirm them in advance at family meeting</li> <li>• Do not pass near rivers or cliffs.</li> </ul>	<b>Prepare in advance emergency bag</b> <ul style="list-style-type: none"> <li>• Check the contents regularly</li> <li>• Charge electrical devices</li> <li>• Minimize items</li> </ul>	<b>Gather accurate information and prepare for evacuation voluntarily!</b> <ul style="list-style-type: none"> <li>• Radio, TV, etc.</li> <li>• Kotohira Town Disaster Prevention Radio</li> </ul>	<b>Check when evacuating</b> <ul style="list-style-type: none"> <li>• Check all possible sources of fire!</li> <li>• the gas tap, electric circuit breaker, etc.</li> <li>• Inform relatives and acquaintances of your evacuation.</li> </ul>
<b>Evacuate immediately</b> <ul style="list-style-type: none"> <li>• At warning level 3, the elderly and people who require assistance</li> <li>• At warning level 4, all residents</li> <li>• When you feel that you are in danger</li> </ul>	<b>Wear non-restrictive clothing</b> Evacuate in groups of two people or more! <ul style="list-style-type: none"> <li>• Long sleeves, long pants</li> <li>• Emergency bag</li> <li>• Sneakers • Rain gear</li> </ul>	<b>Refrain from evacuating by car, evacuate on foot!</b> <ul style="list-style-type: none"> <li>• Traffic congestion</li> <li>• Car breakdown due to flood</li> <li>• Obstruct emergency vehicles</li> </ul>	<b>Support people who require assistance when evacuating!</b> <ul style="list-style-type: none"> <li>• Elderly people</li> <li>• People with disabilities</li> <li>• Pregnant women, infants, etc.</li> </ul>

### Prepare emergency items

Prepare stockpile for about a week. Put your emergency items together in a emergency bag so that you can take them out immediately.

<b>Food</b> <ul style="list-style-type: none"> <li><input type="checkbox"/> Drinking water (3 liters per person per day)</li> <li><input type="checkbox"/> Emergency food</li> </ul>	<b>Clothing, etc.</b> <ul style="list-style-type: none"> <li><input type="checkbox"/> Underwear • Outerwear</li> <li><input type="checkbox"/> Towel</li> <li><input type="checkbox"/> Toiletries</li> </ul>	<b>Valuable • Document</b> <ul style="list-style-type: none"> <li><input type="checkbox"/> Seal</li> <li><input type="checkbox"/> Cash</li> <li><input type="checkbox"/> Bankbook</li> <li><input type="checkbox"/> Passport</li> <li><input type="checkbox"/> Residence card</li> <li><input type="checkbox"/> Driver's license, etc.</li> </ul>	<b>Safety measures • Others</b> <ul style="list-style-type: none"> <li><input type="checkbox"/> Household medicine • Mask</li> <li><input type="checkbox"/> First-aid kit</li> <li><input type="checkbox"/> Writing tools</li> </ul>
<b>Daily items, etc.</b> <ul style="list-style-type: none"> <li><input type="checkbox"/> Flashlight</li> <li><input type="checkbox"/> Portable radio</li> <li><input type="checkbox"/> Spare batteries</li> <li><input type="checkbox"/> Battery charger</li> <li><input type="checkbox"/> Tissue paper</li> </ul>	<b>For household with infants and elderly people</b> <ul style="list-style-type: none"> <li><input type="checkbox"/> Powdered infant formula • Baby feeding bottle</li> <li><input type="checkbox"/> Baby food</li> <li><input type="checkbox"/> Liquid food</li> <li><input type="checkbox"/> Disposal diapers</li> </ul>	<b>For household with pets</b> <ul style="list-style-type: none"> <li><input type="checkbox"/> Cage</li> <li><input type="checkbox"/> Pet food</li> <li><input type="checkbox"/> Pet waste supplies</li> </ul>	

\*Approximate weight of items to be carried: 15kg for men, 10kg or less for women (so that you can run with the emergency bag on your back).  
\*The stockpile such as emergency food and drinking water is for 7 days for all family members.  
\*3 liters of drinking water per person per day is recommended.  
\*Policy of bringing items with you is first "must to have," and then "nice to have."

## Let's take evacuation action according to the situation

Participate in disaster drills conducted by the town or voluntary disaster prevention organizations on a regular basis.

**Confirm in advance** Confirm in advance your evacuation sites in case of emergency with your family and community.

### Check in advance the inundation depth with this map

Note, however, evacuation information may be issued even in areas with no expected inundation or sediment disaster warning.

### Decide in advance the evacuation site

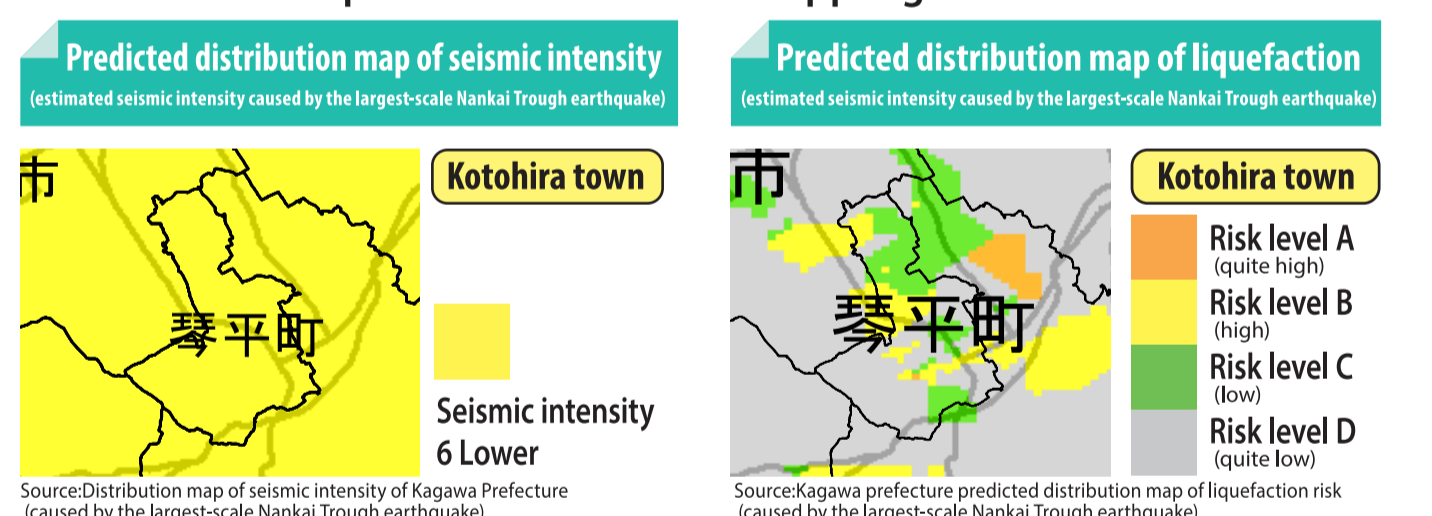
Evacuation sites vary depending on the depth of inundation. To avoid panic during an emergency evacuation, let's decide in advance the evacuation site and confirm the route to the evacuation site.

Anticipated inundation height	Evacuation Action
5.0m or higher	Up to 2nd floor roof or higher. You must evacuate absolutely.
3.0m - less than 5.0m	Up to the eaves of the 2nd floor. Be sure to evacuate while it is still light if time and safe evacuation routes are secured.
0.5m - less than 3.0m	Up to the eaves of the 1st floor. Be sure to evacuate to a safe place indoors if you can not leave for evacuation.
less than 0.5m	Up to under the 1st floor. Do not move recklessly.

Precipitation intensity (in an hour)	Time required to walk 500m (flat ground) (approximation)
10~20mm (Moderate to Heavy Rain)	6 minutes (Adult male)
20~30mm (Heavy Rain)	8 minutes (Adult female)
30~50mm (Very Heavy Rain)	10 minutes (The elderly)
50~80mm (Extreme Rain)	
80mm~ (Torrential Rain)	

## Earthquake and reservoir embankment collapse

Check the seismic intensity of the area where you live in the case of Nankai Trough earthquake and make building earthquake-resistance and take measures to prevent furniture from toppling over.

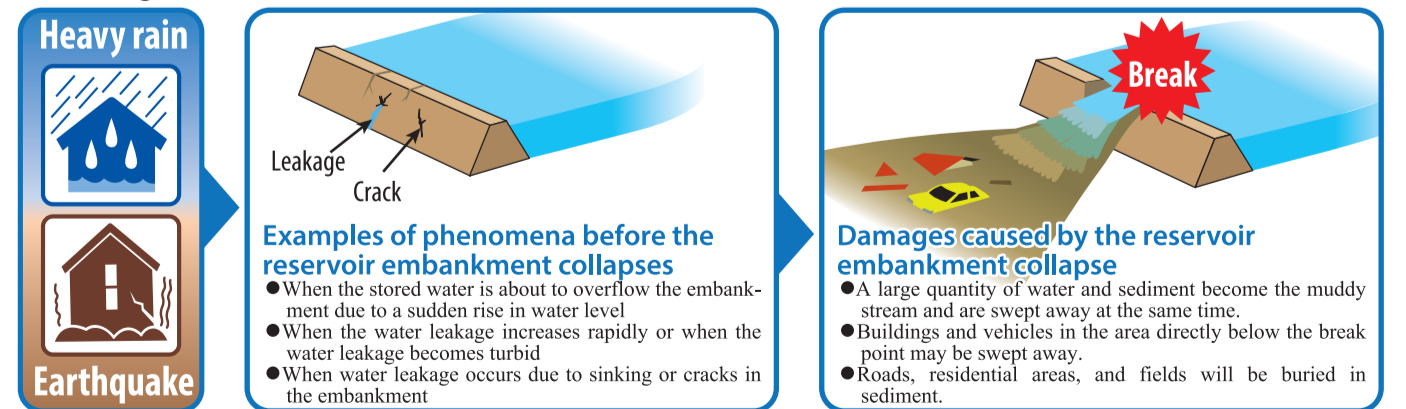


It is difficult to remain standing. Most unsecured furniture move and some may topple over. Wall tiles and windows may sustain damage and fall. For wooden houses with low earthquake resistance, roof tile may fall, and the houses may tilt or collapse.

In Kotohira Town, the tsunami has almost no affect after a major earthquake, but the reservoirs may collapse. Be aware of the condition of reservoirs after a major earthquake.

### How the reservoir embankment collapses

The embankment of reservoir may be damaged and broken due to heavy rain or earthquake that exceeds the strength of the embankment.



If heavy rain continues or an earthquake occurs, the reservoir embankment may break, so evacuate as soon as possible before it collapses. \*It is assumed that all the stored water flows out instantly when the water of the reservoir is full.

### Causes of reservoir embankment collapse (earthquake and heavy rain)

- Heavy rain** When the water level of reservoirs rises due to torrential rains, long periods of rain, landslides, driftwood and so forth, the encroachment of the embankment may occur because of leakage through the embankment or powerful overflowing water. This may cause the collapse of reservoir.
- Earthquake** Due to the strong shaking caused by the earthquake, the embankment may crack or sink, or liquefaction occurs, and then the reservoir may collapse.

## Landslide disaster

The following types of landslides may occur in Kotohira Town. Check the warning areas and so forth on the hazard map.

Landslide disaster warning area (aka:Yellow zones)	Landslide disaster special warning area (aka:Red zones)
Areas where landslide disasters may occur.	Areas where landslide disasters may cause significant harm to the lives of residents.

### Check the hazard map

Check whether your house is in or outside the "Landslide disaster warning area"

### Be careful when evacuating

If your house is in a landslide disaster warning area, be aware of the announcement of the "Sediment disaster alert information".